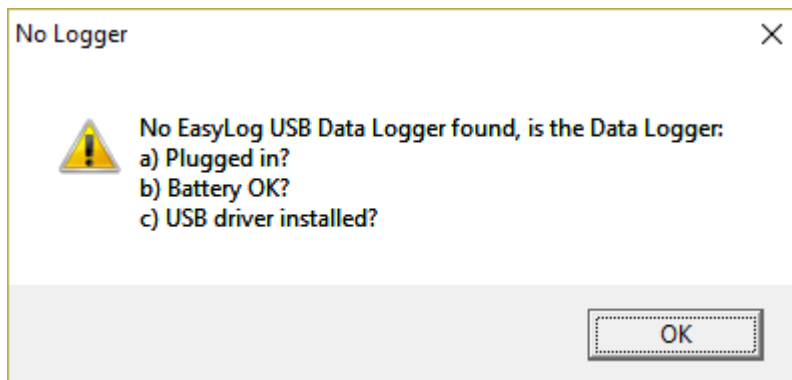


EL-USB range FAQ

I downloaded data a month ago and now when I go to download there's no data, why?

The most likely cause is that the logger was not restarted after the last download. Once you have downloaded the data off the data logger you will need to click the "set up and start USB data logger" button. This will take you through the set up process. The software will remember your previous settings to allow for a quick setup, or they can be changed for your new session.

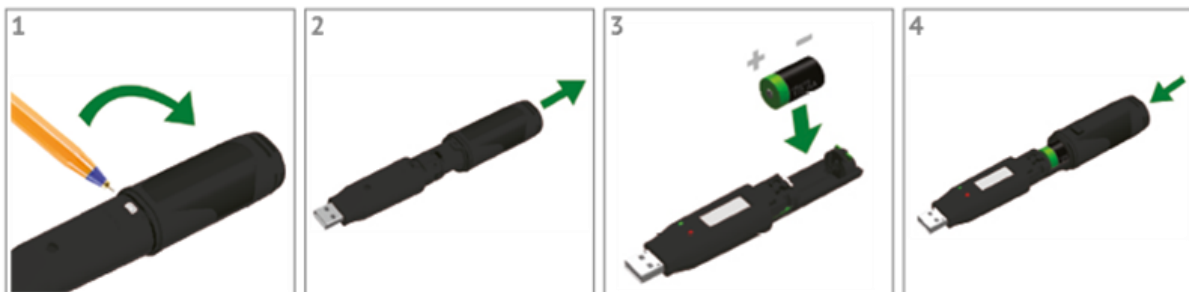
I get the following issue when I try to download, what's wrong with my logger?



The most likely cause of the above issue is that the battery is flat, particularly if the logger has been in use for over a year and/or is downloaded frequently. Replacing the battery will resolve the issue in most cases.

In some cases the Windows driver will not install correctly, or will be corrupted by a Windows update. In this case, we recommend contacting Instrument Choice so that we can show you how to reinstall the driver.

How do I replace the battery?



Can I use any 1/2AA battery like a Saft or EVE battery?

No, it is critically important to use a ER14250BH. Batteries other than this may temporarily or permanently damage your logger. The ER14250BH is the only battery which can supply sufficient pulsed current to the logger.

Why do the LEDs flash after connecting my logger to a PC?

If the LEDs flash sequentially it may indicate that there is a problem with the battery. This could either be a flat battery, which should be replaced, or a battery where a passivation layer has formed. Leaving the data logger connected to a PC for about 30 seconds will remove this layer. After this, remove and re-install the batteries to reset the data logger.

If you see the sequential LEDs after disconnecting the logger from a PC then the logging session will not start. You should check the battery condition and then repeat the setup procedure using the PC software.

How often should I calibrate my logger?

We recommended yearly calibration however your procedures may require you to calibrate more (or less) frequently.

How long will the battery last?

Under typical use, the battery will last approximately 1 year at a 15 minute recording interval. If you download more frequently, or use the logger at low temperatures, the battery life will be reduced.

What do the different things ('---', 'PS' or 'dS') on the LCD screen mean?

If you see '---' on the display of your data logger when you press the button, this indicates that the logger is not logging.

'PS' indicates that the data logger is in Push-to-Start mode. Pressing the button will start the data logging session.

'dS' indicates that the data logger is in Delayed Start mode. The data logging session will start at the time specified when the logger was set up.