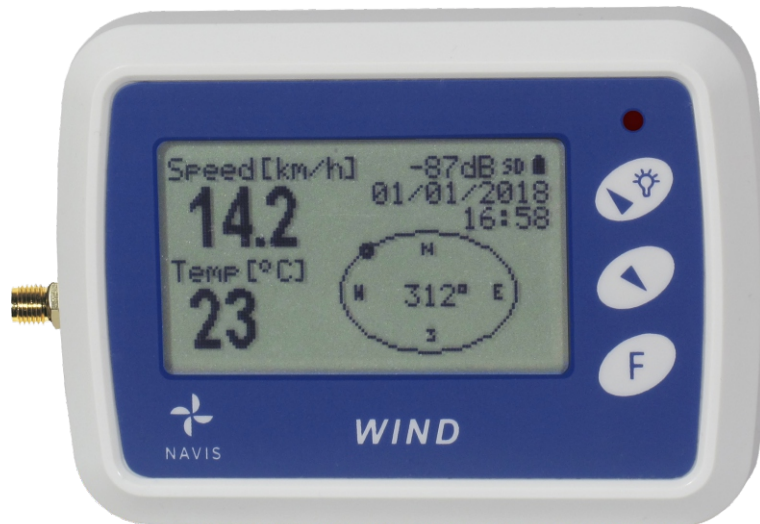




NAVIS

LONG RANGE WIRELESS ANEMOMETER & LOGGER WL12



FUNCTIONS

- current wind speed
- wind direction
- temperature
- 24h wind speed, wind direction and temperature history graphs
- 7 days history of maximum and average wind speed
- date and time

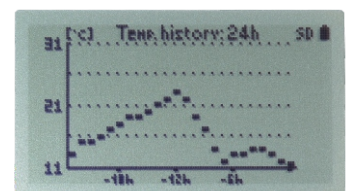
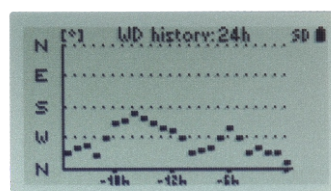
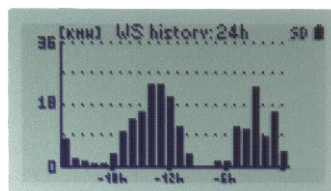
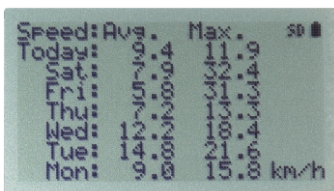
Store to SD card

- average and maximum wind speed in selected interval
- average wind direction (with WSD sensor)
- temperature
- each data has date and time stamp

FEATURES

- easy-to-use solution for wind site evaluation
- easy installation without running cables
- shows and store all vital wind data
- range up to 250 m (1000 m with external antenna and extended range sensor)
- up to 1 year battery life
- battery or external powered
- built-in battery back-up real time clock
- large, night illuminated LCD display

HISTORY DISPLAYS





NAVIS

COMPATIBLE SENSORS:



WS 010-1 (standard range WS sensor)
WS 011-1 (extended range WS sensor)



WSD 010-1 (standard range WSD sensor)
WSD 011-1 (extended range WSD sensor)

ORDERING:

Display unit

1 **WL12/D** display unit

Sets with sensors included

2 **WL12/WS** display unit, standard range WS sensor

3 **WL12X/WS** display unit, external antenna, extended range WS sensor

4 **WL12/WSD** display unit, standard range WSD sensor

5 **WL12X/WSD** display unit, external antenna, extended range WSD sensor



OPTIONS

Wind tunnel certificated version available

OPTIONAL ACCESSORIES

- 1 External SMA antenna
- 2 External antenna with 4 m cable, magnetic mounting
- 3 YAGI antenna
- 4 Spare micro SD card
- 5 USB / micro SD adapter
- 6 External power adapter

MOUNTING ACCESSORIES

Display magnetic mounting assembly





NAVIS

TECHNICAL DATA

Logging:	average and maximum wind speed, wind direction, temperature
Logging interval:	selectable: 10 s, 1 min, 10 min, 60 min
Data recording:	up to 12 months, .txt data format
Memory card:	micro SD (enclosed)
Wind speed measurement range:	0,6...50 m/s
Wind direction measurement range:	0°– 359°
Temperature measurement range:	-30....+60 °C
Wind speed units:	m/s, km/h, knots, mph
Temperature units:	°C, °F
Wind speed resolution:	0,1 m/s
Wind direction resolution:	1°
Temperature resolution:	1°C
Wind speed accuracy:	+/- 2,5 %, calibration possible in 0,5% steps
Wind direction accuracy:	+/- 2,5°, adjustable offset +/- 180°
Temperature accuracy:	+/- 1°C, calibration possible in 0,5 °C steps
Communication frequency :	868 MHZ
Data transmitting:	every 2 seconds
Range:	
- with internal antenna and standard range sensor	up to 250 m visible distance
- with external SMA antenna and extended range sensor	up to 1000 m visible distance
- with Yagi antenna	3-4 x nominal range
Battery:	4 x 1,5 V AA battery (not included)
Battery life:	up to 12 months (without display illumination)
Externall power supply:	5V DC
Externall power connector:	micro USB (adapter is not enclosed)
Casing:	ABS, 115 x 83 x 32 mm
Antenna input:	50 Ohm, SMA connector