

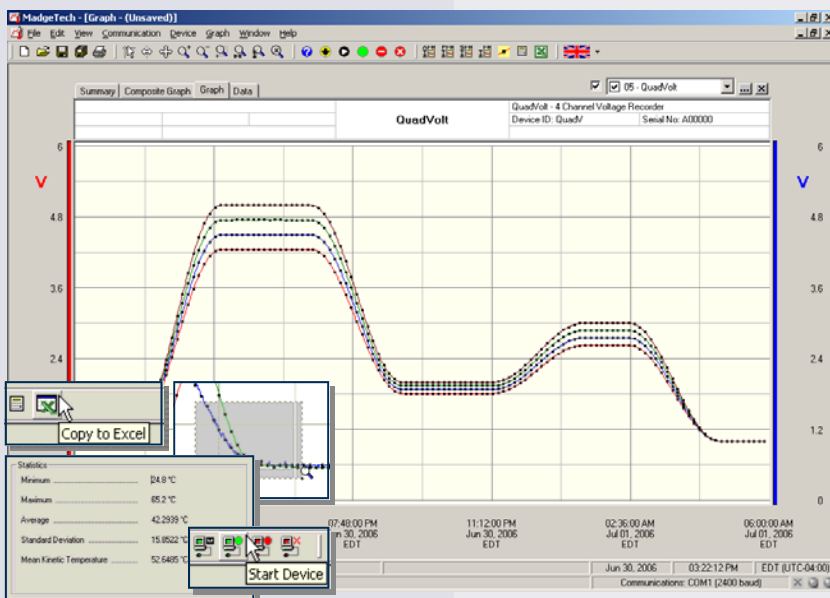
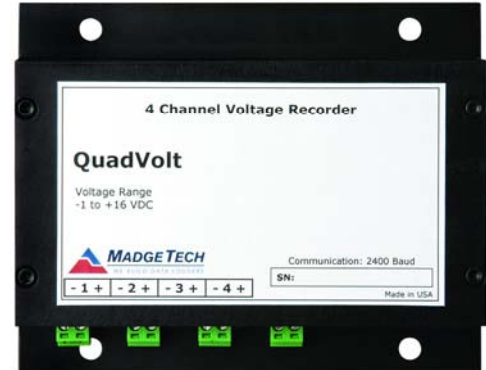
### Features

- Real-time operation
- Programmable engineering units
- Low cost
- Reusable
- Compact
- User-friendly
- Programmable start time

### Applications

- Low level signal monitoring
- Medical and pharmaceutical
- Battery studies
- Power supply monitoring
- Process plants
- Environmental studies
- Research and development
- Replace costly strip chart recorders

The Quadvolt is a four channel, battery powered, stand alone voltage recorder. This is an all-in-one compact, portable, easy to use device that will measure and record up to 32,767 measurements per channel. The storage medium is non-volatile solid state memory, providing maximum data security even if the battery becomes discharged. The device can be started and stopped directly from your computer and its small size allows it to fit almost anywhere. The QuadVolt makes data retrieval quick and easy. Simply plug it into an empty COM or USB port and our user-friendly software does the rest.



**MadgeTech Data Recorder Software** displays voltage data in an easy to use graph.

The Windows®-based software package allows the user to effortlessly collect, display and analyze data. A variety of powerful tools allow you to examine, export, and print professional looking data with just a click of the mouse.

Click [MadgeTech Software](#) for more information or to download the software.

# QUADVOLT SPECIFICATIONS\*

<b>Input Connection:</b>	4 removable screw terminals		
<b>Model:</b>	<b>2.5V</b>	<b>15V</b>	<b>30V</b>
<b>Voltage Range:</b>	-0.25 to +2.75	-1.0 to +16.0	-2.0 to +32.0
<b>Voltage Resolution:</b>	0.1 mV	0.5 mV	1.0 mV
<b>Calibrated Accuracy:</b>	±0.01 (%FSR)	±0.10 (%FSR)	±0.10 (%FSR)
<b>Input Impedance:</b>	>1 kΩ*	>10 kΩ	>10 kΩ
<b>Overload Protection:</b>	±5 V	±30 V	±48 V
<b>Temperature Coefficient:</b>	< 25ppm/°C	< 250ppm/°C	< 250ppm/°C
<b>Analog Conversion Time:</b>	133ms		
<b>Frequency Rejection:</b>	60Hz		
<b>Specified Accuracy Range:</b>	Nominal range @ 25°C		
<b>Engineering Units:</b>	User may define units up to 10 characters in length. This value is stored within the device.		
<b>Scale Factor:</b>	User may program any desired scaling factor from ±1.000E-31 to ±9.999E+31. The scaling factor is stored within the device.		
<b>Start Modes:</b>	Software programmable immediate start or delay start up to six months in advance		

**Memory:** 32,767 readings per channel; 131,068 total readings

**Reading Rate:** 1 reading every second to 1 every 12 hours

**Real Time Recording:** May be used with PC to monitor and record data in real time

**Calibration:** Digital calibration through software

**Calibration Date:** Automatically recorded within device

**Battery Type:** 9V lithium or alkaline battery included; **user replaceable**

**Battery Life:** 1 year typical

**Data Format:** Date and time stamped V, mV, µV, engineering units specified through software

**Time Accuracy:** ±1 minute/month (at 20 °C, RS232 cable not in use)

**Computer Interface:** PC serial or USB (interface cable required); 2,400 baud

**Software:** XP SP3/Vista/Windows 7

**Operating Environment:** -20 to +60°C, 0 to 95%RH non-condensing

**Dimensions:** 3.5" x 4.4" x 1.0" (89 mm x 111 mm x 26 mm)

**Weight:** 13 oz (370 g)

Input impedance is greater than 1 MΩ during acquisition for the QUADVOLT-2.5

**BATTERY WARNING:** DISCARD USED BATTERY PROMPTLY. KEEP OUT OF REACH OF CHILDREN. DO NOT DISPOSE OF IN FIRE, RECHARGE, PUT IN BACKWARDS, DISASSEMBLE, OR MIX WITH OTHER BATTERY TYPES. MAY EXPLODE, FLAME OR LEAK AND CAUSE PERSONAL INJURY.

## SOFTWARE FEATURES

**Multiple Graphs:** Simultaneously analyze data from several units or deployments; easily switch to a single data series

**Statistics:** Calculate averages, min, max, standard deviation, and mean kinetic temperature with the touch of a button

**Graphical Cursor:** One click displays readings by time, value, parameter or sample number

**Export Data:** Export data in a variety of common formats, or switch to Excel® with a single click

**Data Table:** Instantly access tabular view for detailed dates, times, values, and annotations

**Calibration:** Automatically calculate and store calibration parameters

**Scaling Options:** Autoscale function fits data to the screen, or allows user to manually enter their own values

**Logger Configuration:** Easy set up and launch of data loggers with immediate or delayed start, preferred sample rate, and device ID

**Formatting Options:** Change colors, line styles, plotting options, show or hide channels quickly

**Communications:** Automatically sets up communications port, or lets user select configuration

\*SPECIFICATIONS ARE SUBJECT TO CHANGE WITHOUT NOTICE. SPECIFIC WARRANTY AND REMEDY LIMITATIONS APPLY. CALL 1-603-456-2011 OR GO TO WWW.MADGETECH.COM FOR DETAILS.

## ORDERING INFORMATION

Model	Description
QUADVOLT-100mV	±100mV 4 Channel Voltage Recorder
QUADVOLT-2.5V	±2.5V 4 Channel Voltage Recorder
QUADVOLT-15V	±15V 4 Channel Voltage Recorder
QUADVOLT-30V	±30V 4 Channel Voltage Recorder
IFC110	Software, manual and RS232 interface cable
IFC200	Software, manual and USB interface cable
U9VL-J	Replacement battery for QuadVolt

### ASK ABOUT OUR OTHER DATA RECORDERS

Temperature	Pulse/Event/State
Humidity	Low Level Current
Pressure	Low Level Voltage
pH	RF Transmitters
Level	Intrinsically Safe
Shock	Spectral Vibration
LCD Display	

For quantity discounts call 1300 737 871 or email [customer-service@instrumentchoice.com.au](mailto:customer-service@instrumentchoice.com.au)

Supplied in Australia by Instrument Choice  
Call our scientists on 1300 737 871  
[www.instrumentchoice.com.au](http://www.instrumentchoice.com.au)



DOC-1039009-00 REV D 2010.06.28

879 Maple Street · Contoocook, NH 03229  
PO Box 50 · Warner, NH 03278 · Phone: (603) 456-2011 · Fax: (603) 456-2012