

OCTTEMP2000

8 CHANNEL THERMOCOUPLE DATA LOGGER WITH LCD



Features

- Large Backlit LCD
- User-Friendly Front Panel
- Accepts Thermocouple Types J, K, T, E, R, S, B, N
- High Speed Downloading
- Onscreen Statistics
- External Power or User Replaceable Battery
- Low Battery Indicator

Benefits

- Simple Setup and Installation
- Minimal Long-Term Maintenance
- Long-Term Field Deployment

Applications

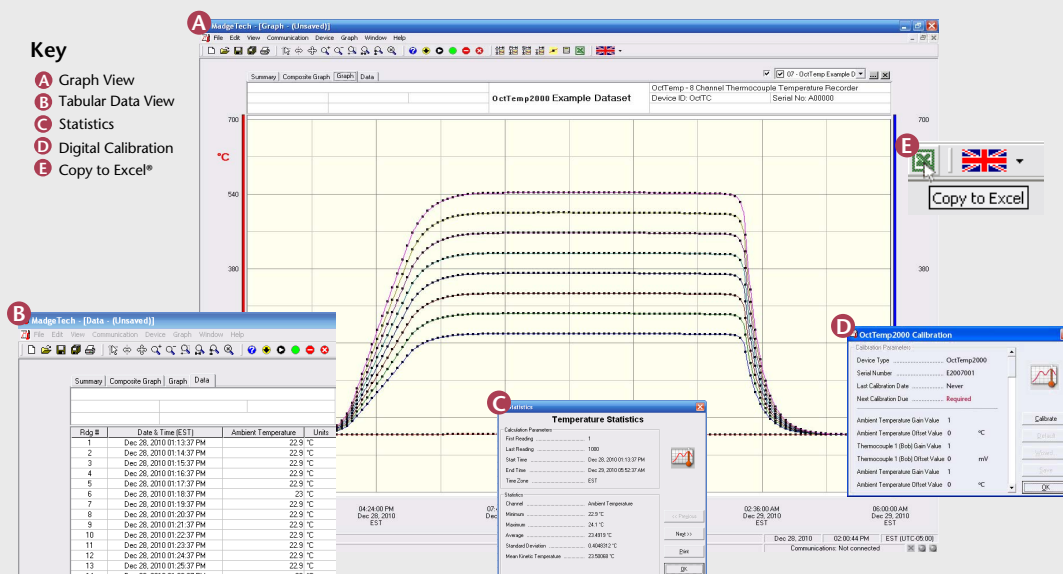
- Monitor Multiple Points
- Warehouse Monitoring
- Refrigerator Monitoring
- Medical and Pharmaceutical
- Oven Monitoring
- Smoke Houses
- Food Processing
- HVAC
- Engine Studies



The OctTemp2000 is an eight channel thermocouple data logger with an LCD. The device features onscreen minimum, maximum and average statistics, as well as a user configurable graphics screen that allows for any combination of channels to be displayed. The device accepts J, K, T, E, R, S, B and N type thermocouples.

The OctTemp2000 is ideal for a variety of applications, whether it is remote temperature monitoring, or multiple points in a central location. Data from all channels is simultaneously logged and displayed onscreen for real-time monitoring. It can then be downloaded to a PC for further analysis.

MADGETECH DATA LOGGER SOFTWARE



Software Features:

- Multiple graph overlay
- Statistics
- Digital calibration
- Zoom in/ zoom out
- Lethality equations (F_0 , PU)
- Mean Kinetic Temperature
- Full time zone support
- Data annotation
- Min./Max./Average lines
- Data table view
- Automatic report generation
- Summary view
- Multilingual

OCTTEMP2000 SPECIFICATIONS*

Internal Channel

Temperature Range: -20 to +60°C

Temperature Resolution: 0.05°C

Calibrated Accuracy: $\pm 0.5^{\circ}\text{C}$ (0 to +50°C)

8 Remote Channels

Remote Channel
Thermocouple Types: J, K, T, E, R, S, B, N

Thermocouple connection: Female subminiature (SMP)

Cold Junction Compensation: Automatic, based on internal channel

Maximum Thermocouple
Resistance: 1000 Ω , <100 Ω recommended

Thermocouple	Range (°C)	Resolution	Accuracy
J	-210 to +760	0.1 °C	$\pm 0.5^{\circ}\text{C}$
K	-260 to +1370	0.1 °C	$\pm 0.5^{\circ}\text{C}$
T	-260 to +400	0.1 °C	$\pm 0.5^{\circ}\text{C}$
E	-260 to +980	0.1 °C	$\pm 0.5^{\circ}\text{C}$
R	-50 to +1760	0.5 °C	$\pm 2.0^{\circ}\text{C}$
S	-50 to +1760	0.5 °C	$\pm 2.0^{\circ}\text{C}$
B	+60 to +1820	0.5 °C	$\pm 2.0^{\circ}\text{C}$
N	-260 to +1300	0.1 °C	$\pm 0.5^{\circ}\text{C}$

Start Modes: Software programmable immediate start or delay start up to six months in advance

Real Time Recording: May be used with PC to monitor and record data in real time

Memory: 500,000 readings per channel, channels can be disabled to increase memory

Reading Rate: 4 readings per second up to 1 every 24 hours

Calibration: Digital calibration through software

Calibration Date: Automatically recorded within device

Battery Type: 9 Volt lithium or alkaline battery included, user replaceable

Battery Life: 18 months typical with display off. 3 months typical with continuous display use.

Data Format: Date and time stamped °C, °F, K, °R, mV, V

Time Accuracy: ± 1 minute/month

Computer Interface: USB (Interface cable required); 115,200 baud

Software: XP SP3/Vista/Windows 7

Operating Environment: -20 to +60°C, 0 to 95%RH non-condensing

Dimensions: 7.24" x 2.7" x 1.39" (183mm x 68mm x 36mm)

Material: Black anodized aluminum

Weight: 16.9 oz (480 g)

Approvals: CE

BATTERY WARNING: WARNING: FIRE, EXPLOSION, AND SEVERE BURN HAZARD. DO NOT SHORT CIRCUIT, CHARGE, FORCE OVER DISCHARGE, CRUSH, PENETRATE, OR INCINERATE. BATTERY MAY LEAK OR EXPLODE IF HEATED ABOVE 80°C (176°F).

*SPECIFICATIONS ARE SUBJECT TO CHANGE WITHOUT NOTICE. SPECIFIC WARRANTY REMEDY LIMITATIONS APPLY. CALL 1-603-456-2011 OR GO TO WWW.MADGETECH.COM FOR DETAILS.

ORDERING INFORMATION

MODEL	DESCRIPTION
OCTTEMP2000	8 Channel Thermocouple Recorder
IFC200	Software, manual and USB interface cable
U9VL-J	Replacement battery for OctTemp2000

For quantity discounts call 1300 737 871 or email customer-service@instrumentchoice.com.au

Supplied in Australia by Instrument Choice
Call our scientists on 1300 737 871
www.instrumentchoice.com.au

ASK ABOUT
OUR OTHER
DATA
LOGGERS

Temperature
Humidity
Pressure
pH
Level
Shock
LCD Display
Pulse/Event/State
Current
Voltage
Wireless
Intrinsically Safe
Spectral Vibration
Motion