

Envirotherm

By Thermoline Scientific

ENVIRONMENTAL TEMPERATURE AND HUMIDITY CABINETS

(-35°C TO +120°C) (20% TO 95% RH)

(Image: TEC-460)



- Australian Made
- 460 litre model available
- Precise control of temperature and humidity
- STAR 700 user friendly 7" colour touch screen
- Quiet running CFC free refrigeration system
- Humidity control via in built dew point water trough
- Monitoring or cable point access port
- Fully adjustable heavy duty stainless steel open wire shelves
- Fitted with castors to allow for easy moving





Product Features

The TEC series manufactured by Thermoline offers precise control of temperature and humidity. This key model has the ability to perform heating, cooling, humidification and dehumidification functions. This model features a wide temperature range of -35°C to +120°C, has up to 600watts heat removal capacity and is internally constructed from 316 stainless steel and are externally constructed from Colorbond steel. Thermoline also has the ability to customise each unit to meet unique applications.

Features
Fan forced air supply delivers conditioned air throughout for precise internal conditions
Temporal stability at set point better than $\pm 0.2^{\circ}\text{C}$ and $\pm 1\% \text{RH}$ (unloaded chamber)
Spatial accuracy measured to be better than $\pm 2^{\circ}\text{C}$ and $\pm 5\% \text{RH}$ (unloaded chamber)
Advanced Alarm Systems with battery back up, high and low alarms, power fail and battery fail alarms plus BMS connection
Dehumidification via purpose built refrigeration system with air cooled condenser
Heating and humidification provided through electric heating element
Cooling provided via evaporator coils with in air handling system and electronic switching of solenoid valves
High grade electronic temperature and humidity sensor
50mm cable port access point (additional ports available)
Convenient manual or log book holder on side of cabinet
Easy installation with optional gravity feed or pumped water tank
Built in condensate drain system allows easy cleaning of internal trough generator

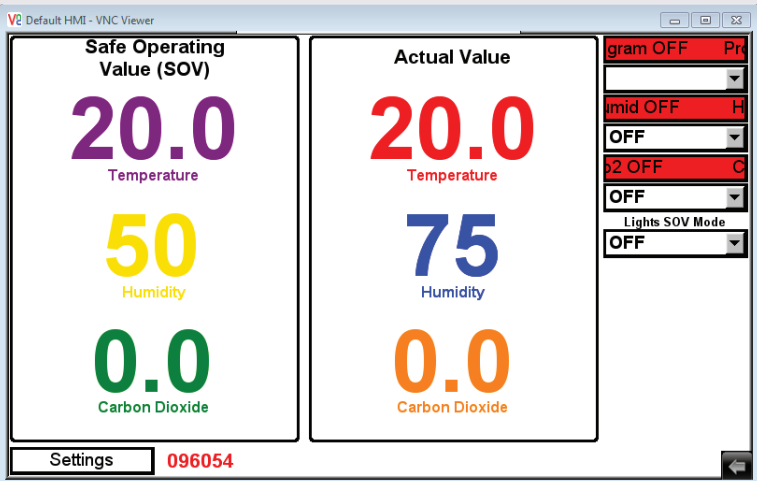
STAR 700 Controller

Envirotherm cabinets are powered by Thermoline’s **Select Touch And Run (STAR 700)** touch pad control system. The STAR 700 touch pad control system offers easy to program diurnal control of temperature, lighting, humidity and carbon dioxide.

The STAR 700 features a large 154x87mm rugged full colour touchscreen, PC connectivity via ethernet cable and synchronize programmed settings which can be viewed in real time.

The STAR 700 logs the performance of the cabinets for up to up to 800 days.

A live trend screen to allow the operator to quickly check the performance conditions within the cabinet. Alternatively the operator can download the logged data to a USB and then view data via a Excel spread sheet.



Safety Features

Auto over temperature safety (Failsafe)

Built in electric element safety cut out

Lockable castors

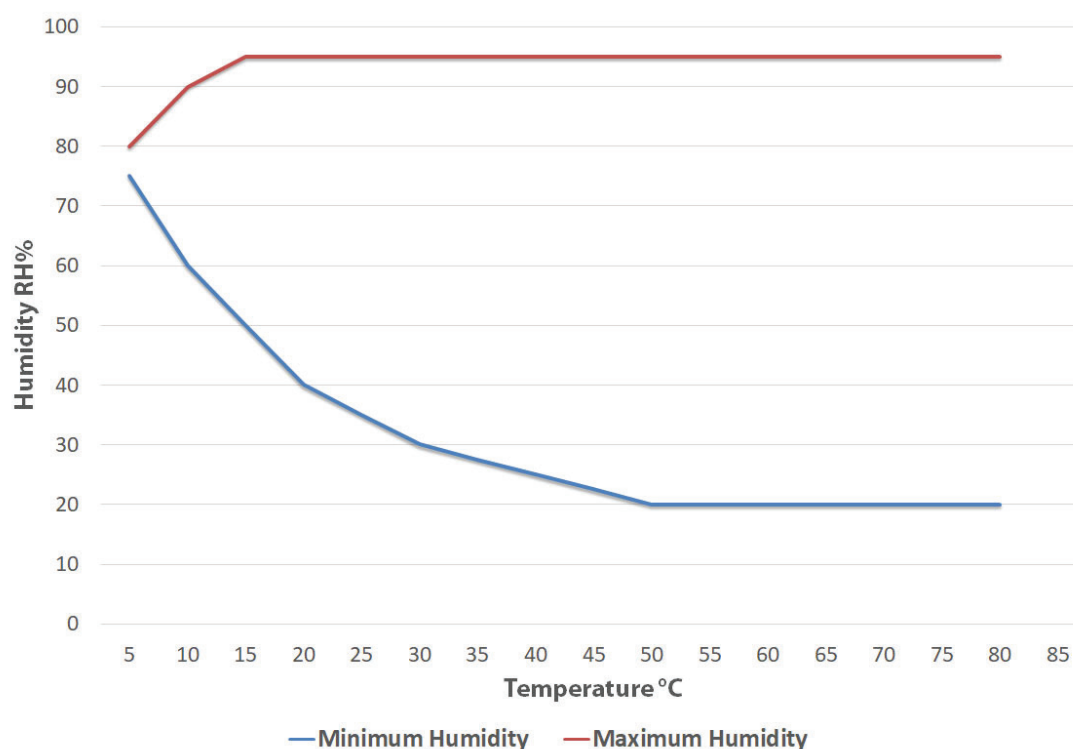
Water trough with automatic water level detection and low water safety cut out

Optional Accessories

Retransmission of process variables

Additional cable port entry holes

Temperature and Humidity Performance



Model	TEC-460-SD
Temperature Range	-35°C to +120°C
Temperature Stability	±0.2°C
Temperature Uniformity	±2.0°C
Humidity Range	20% to 95%
Humidity Stability	± 1% RH
Humidity Uniformity	± 5% RH
Internal Dimensions (WxDxHmm)	650x650x1140
External Dimesnions (WxDxHmm)	820x950x2030
Capacity (litres)	460
Shelf Positions	Multiple
Shelves Supplied	4
Electrical Supply	240vac 15amps
Heat Removal Capacity @ 10°C (watts)	600
Weight (kg)	320

Head Office Phone (02) 9604 3911

Head Office Fax (02) 9725 1706

Email hello@thermoline.com.au

Web www.thermoline.com.au



Thermoline Scientific have been manufacturing and distributing high quality laboratory and scientific testing equipment since 1970. Over this time, Thermoline has grown to be a leading brand in the science industry, with our equipment being used in small and large Hospitals, Universities and Research Laboratories across Australia and the Asia Pacific region.

We're proud to say that we are 100% Australian owned and operated.