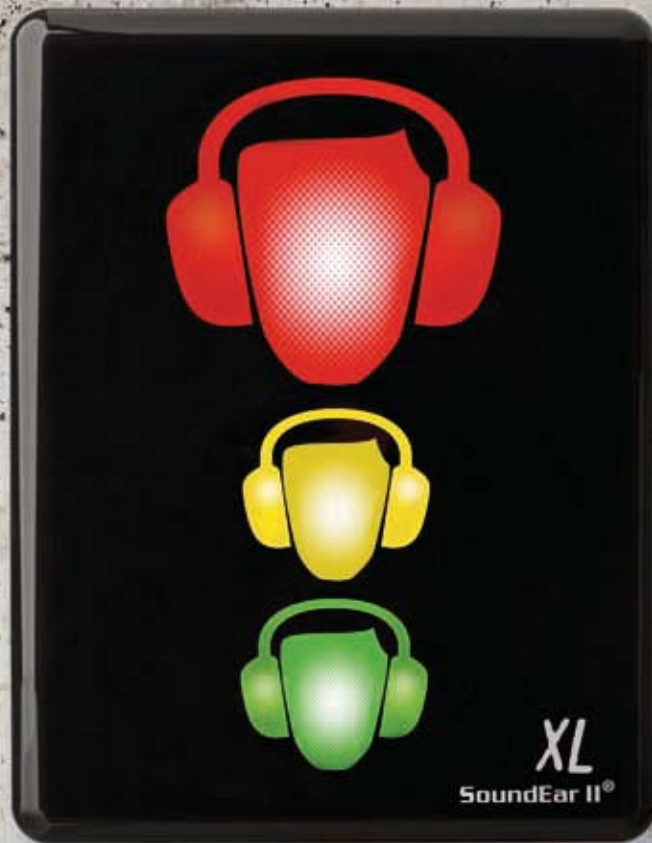
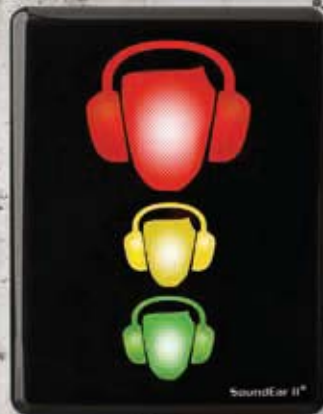
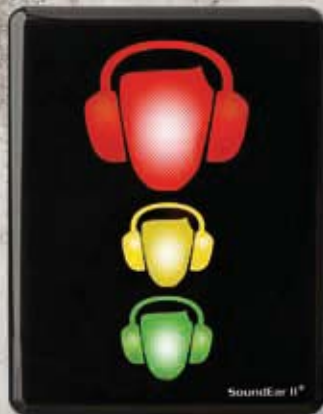


Industry XL

Find out exactly
when to use ear protection



4 x SoundEar®II industry = 1 SoundEar Industry XL



SoundEarII® can be connected
to an external microphone.



www.soundear.com

SoundEar II® Industry XL



Big signs for big locations!

In workplaces, where noise levels depend on location and production processes, it is sometimes difficult to decide whether ear protection is needed or not.

Industry XL® leaves nothing to chance. It omits a clear and easily understandable warning in those areas where the use of ear protection is required.

Industry XL is dust – and waterproof and can be used indoors as well as outdoors.

Technical data:

Standards: IEC 61672

Mechanical features:

Cabinet: Shockproof acrylic
Measurements: length: 576 mm,
width: 376 mm, height: 46 mm

Electrical features:

Power supply: 24 Volt DC

Temperature: During operation: 0 °C to 50 °C
When stored/during transport:
-20 °C to 60 °C

Dampness and dust:

IP 42

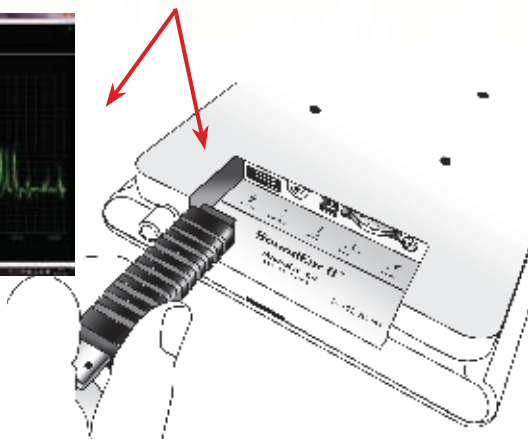
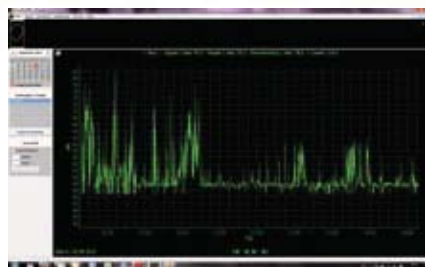
Measurement parameters:

Frequency: 20Hz to 16 kHz
Scope of measurement: 40 dB to 115 dB
Frequency weighing: A-filter
Time weighing: Slow (1 sec)
Deviation: +/- 3 dB

[More information: visit WWW.SOUNDSAFETY.COM.AU]

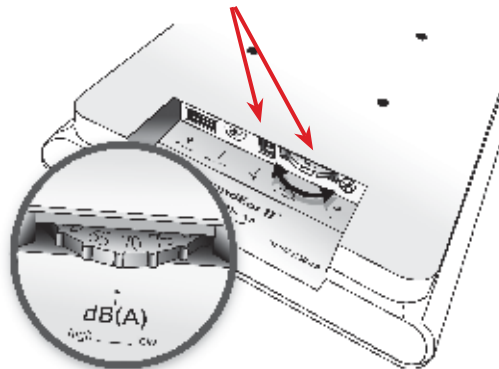
SoundLog

A data log that saves measurements for up to four weeks is available for the SoundEar II® system. SoundEar II® measures sounds and the measurements are saved by the data log. The computer program delivered along with the data log allows the measurements from the last four weeks to be shown in a printable graph.



You can pre-set your SoundEar II® to provide a visual warning sign consisting of a flashing red light at 16 different noise limits ranging from 40 to 115 dB(A). Use the red wheel at the bottom of the device to select the desired noise limit. Our website contains information on suitable noise limits.

SoundEar II® can be connected to an external microphone.



Visit WWW.SOUNDSAFETY.COM.AU
Ph +61 2 80658976

