

# THERM•A•LERT-P

## TEMPERATURE MONITORING AND ALARMING SYSTEM WITH WIRELESS TWO-WAY COMMUNICATION



### Features

- Wireless Two-Way Communication
- Precision RTD Sensing Element
- View Data in Real-Time
- 2 Year Battery Life
- Battery Life Indicator
- N.I.S.T. Traceable
- Field Upgradeable

### Benefits

- Fast Installation
- Minimal Long-Term Maintenance
- Full Communication From One PC

### Applications

- Refrigerator/Freezer Monitoring
- Calibration chamber monitoring
- Laboratory monitoring
- Hospitals
- Blood Banks
- HVAC

The MadgeTech Therm•A•lert-P temperature monitoring and alarming system is designed specifically for hospitals, laboratories, pharmaceutical facilities and other critical temperature monitoring areas. The system can be used to monitor a single temperature location or expanded to include hundreds of locations by adding additional transmitters. The Therm•A•lert-RH records both ambient temperature and humidity.

Therm•A•lert-P provides real time notification of temperature deviations, and features a user programmable alarm that can be configured to send a message via text message, screen alarm and/or e-mail if an alarm condition occurs. The system includes an RTD probe with a 3' lead wire and a 3" probe sheath.

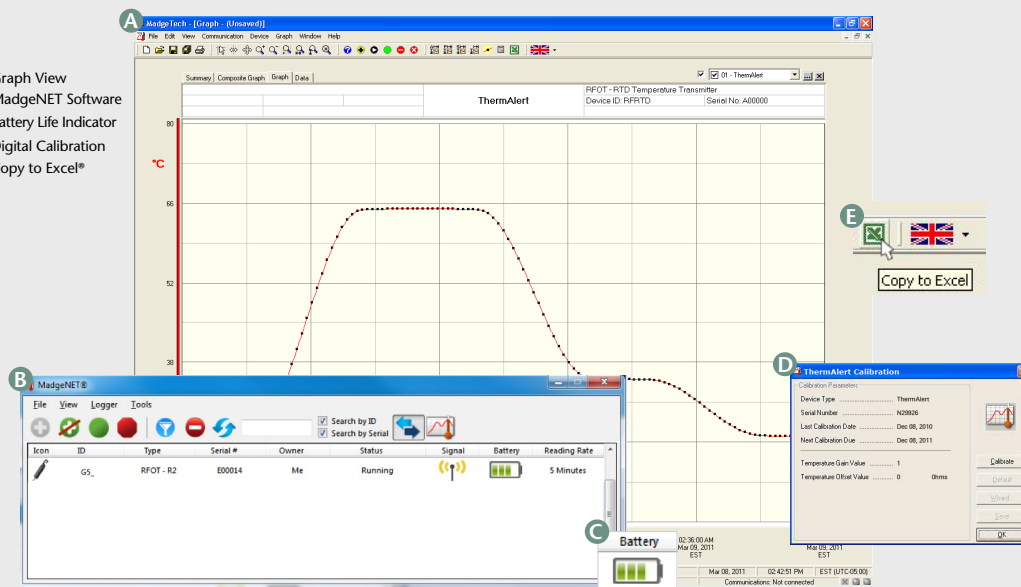
The Therm•A•lert-P system is equipped with wireless two-way communication. Full communication can be performed directly from a central PC, including starting, stopping and downloading. In addition to wirelessly transmitting data, Therm•A•lert-P also stores each reading to internal memory for backup. This back up data may be retrieved wirelessly at a later time. Customers can setup automatic archiving preferences, ensuring all data is saved and retained to comply with federal regulations.



## MADGETECH DATA LOGGER SOFTWARE

### Key

- A Graph View
- B MadgeNET Software
- C Battery Life Indicator
- D Digital Calibration
- E Copy to Excel®



### Software Features:

- Multiple graph overlay
- Statistics
- Digital calibration
- Zoom in/ zoom out
- Lethality equations ( $F_0$ , PU)
- Mean Kinetic Temperature
- Full time zone support
- Data annotation
- Min./Max./Average lines
- Data table view
- Automatic report generation
- Summary view
- Multilingual

# THERM•A•LERT-P SPECIFICATIONS\*

## Temperature

**Probe Temperature Range:** -200°C to +440°C (-328°F to +824°F)

**Resolution:** 0.01°C

**Probe Calibrated Accuracy:** ±0.1°C (14°F to 302°F/-10°C to +150°C)  
±0.5°C (outside of that range)

## Wireless

**RF Frequency:** 2.45GHz IEEE 802.15.4 ultra-low power MadgeNET wireless transceiver with fully bi-directional communication

**Band:** ISM band 2.405-2.48 GHz

**Output Power:** +0dBm typical

**Receiver Sensitivity (RFC1000):** -95dBm typical

**Range:** Line-of-sight 400', indoors 150'

\*SPECIFICATIONS ARE SUBJECT TO CHANGE WITHOUT NOTICE. SPECIFIC WARRANTY REMEDY LIMITATIONS APPLY. CALL 1-603-456-2011 OR GO TO WWW.MADGETECH.COM FOR DETAILS.

**BATTERY WARNING:** Do not recharge, disassemble, heat above 125°C (257°F), incinerate or expose contents to water. Vent, rupture or explosion may result and cause severe burns.

## General

**Reading Rate:** One reading every two seconds to one every 24 hours

**Memory:** 30,000 readings;  
software configurable memory wrap

**Wrap Around:** Yes

**Start Modes:** • Immediate start  
• Delay start up to 18 months

**Calibration:** Digital calibration through software

**Calibration Date:** Automatically recorded within device

**Battery Type:** 3.6V lithium battery included; **user replaceable**

**Battery Life:** 2 years typical

**Data Format:** Date and time stamped °C, °F, K, °R

**Time Accuracy:** ±1 minute / month (at 25°C)

**Computer Interface:** RFC1000 required; 115,200 baud (IFC200 in use)

**Software:** XP SP3/Vista/Windows 7

**Operating Environment:** -20°C to +80°C (-4°F to 176°F),  
0%RH to 95%RH non-condensing

**Dimensions:** Data Logger:  
2.2" x 5.0" x 1.3" (55mm x 127mm x 33mm)  
Wire: 3'  
Probe: 3/16" dia x 4.5"

**Enclosure Material:** ABS Plastic

**Approvals:** CE

## ORDERING INFORMATION

MODEL	DESCRIPTION
THERM•A•LERT-P	Temperature data logger with wireless transmitter equipped with precision RTD probe
RFC1000	Wireless RF Receiver for use with MadgeNET. USB to mini USB adapter included to connect to PC.
RFC1000-REPEATER	Wireless RF Receiver for use with MadgeNET. USB to mini USB adapter and power supply included.
TLH-5903	Replacement battery for Therm•A•lert-P

ASK ABOUT  
OUR OTHER  
DATA  
LOGGERS

Temperature  
Humidity  
Pressure  
pH  
Level  
Shock  
LCD Display  
Pulse/Event/State  
Current  
Voltage  
Wireless  
Intrinsically Safe  
Spectral Vibration  
Motion

For quantity discounts call 1300 737 871 or email [customer-service@instrumentchoice.com.au](mailto:customer-service@instrumentchoice.com.au)

Supplied in Australia by Instrument Choice  
Call our scientists on 1300 737 871  
[www.instrumentchoice.com.au](http://www.instrumentchoice.com.au)