

CTL2000 CARCASS TEMPERATURE LOGGER



Features

- Type K thermocouples included
- IP65, dust proof and splash proof
- Pushbutton or programmable start for efficient processing
- Channel naming for location detection
- Open channel detection
- 8 thermocouple clips included

Benefits

- Simple Setup and Installation
- Minimal Long-Term Maintenance
- Long-Term Field Deployment

Applications

- Carcass Temperature Monitoring
 - Pasteurization
 - Verification
 - Validation
- Pathogen Reduction
- Post-slaughter Pasteurization

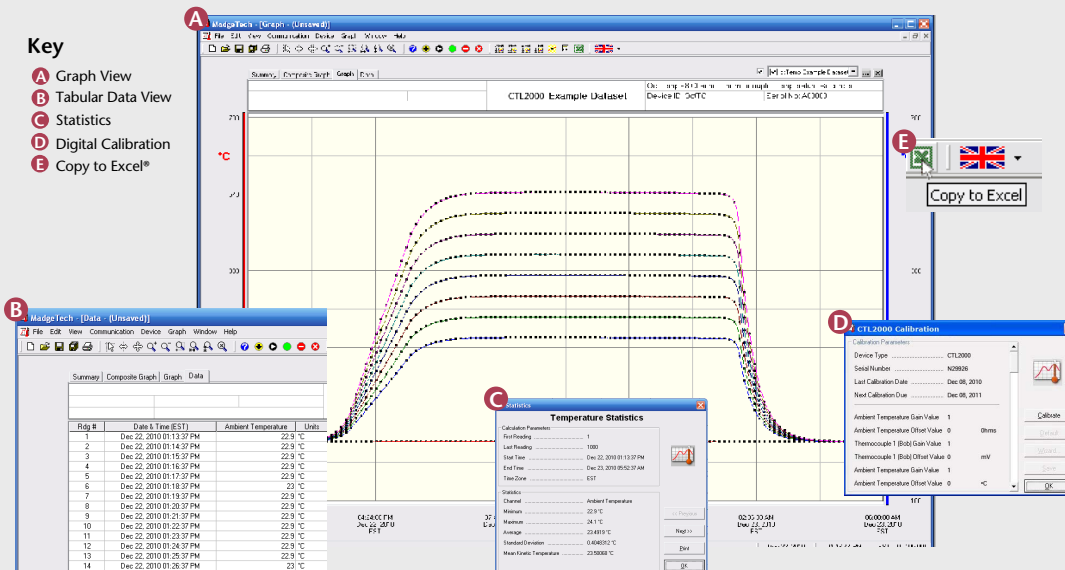
MadgeTech's Carcass Temperature Logger measures and records data from up to 8 thermocouple channels allowing the user to verify and validate post-production meat pasteurization cycles. The CTL2000 aids in reducing pathogens, and helps to ensure post-slaughter pasteurization process parameters are met.

The CTL2000 has a black anodized aluminum enclosure with a stainless steel hook allowing the device to be hung directly from a carcass. This durable logger is splashproof and can be used through the entire pasteurization process. The eight thermocouples can be inserted into different sections of the meat to provide an overall temperature profile. This logger features a push button or programmable start and status LEDs for process optimization. In addition, if a thermocouple is removed or severed during logging, the software automatically annotates the data.

MadgeTech's CTL2000 can help to reduce and prevent food safety problems, improve quality and ensure that the chances of a recall are minimized.



MADGETECH DATA LOGGER SOFTWARE



- Software Features:**
- Multiple graph overlay
 - Statistics
 - Digital calibration
 - Zoom in/ zoom out
 - Lethality equations (F₀, PU)
 - Mean Kinetic Temperature
 - Full time zone support
 - Data annotation
 - Min./Max./Average lines
 - Data table view
 - Automatic report generation
 - Summary view
 - Multilingual

CTL2000 SPECIFICATIONS*

Internal Channel

Temperature Range: -20 to +60°C

Temperature Resolution: 0.05°C

Calibrated Accuracy: ±0.5°C (0 to +50°C)

8 Remote Channels

Remote Channel Type K Supplied

Thermocouple Types: (J, T, E, R, S, B and N compatible)

Thermocouple connection: Female subminiature (SMP)

Cold Junction Compensation: Automatic, based on internal channel

Maximum Thermocouple Resistance: 1000Ω, <100Ω recommended

Thermocouple	Range (°C)	Resolution	Accuracy
K	-260 to +1370	0.1 °C	±0.5 °C

Start Modes: Software programmable immediate start, push button or delay start up to six months in advance

Real Time Recording: May be used with PC to monitor and record data in real time

Memory: 500,000 readings per channel, channels can be disabled to increase memory

Reading Rate: 4 readings per second up to 1 every 24 hours

Calibration: Digital calibration through software

Calibration Date: Automatically recorded within device

Battery Type: 6 AA batteries included, user replaceable

Battery Life: 2 years typical

Data Format: Date and time stamped °C, °F, K, °R, mV, V

Time Accuracy: ±1 minute/month

Computer Interface: USB (Interface cable required); 115,200 baud

Software: XP SP3/Vista/Windows 7

Operating Environment: Continuous use: -20~+60°C (-4°F to 140°F)

Temperature	Maximum Time
75°C	23 minutes
100°C	17 minutes
125°C	14 minutes

IP Rating: IP65

Dimensions: 7.7" x 5.9" x 1.9"
(196mm x 150mm x 48mm)

Material: Enclosure: black anodized aluminum
Hook: stainless steel

Weight: 5lbs 8oz

BATTERY WARNING: DISCARD USED BATTERY PROMPTLY. KEEP OUT OF REACH OF CHILDREN. DO NOT DISPOSE OF IN FIRE, RECHARGE, PUT IN BACKWARDS, DISASSEMBLE, OR MIX WITH OTHER BATTERY TYPES. MAY EXPLODE, FLAME, OR LEAK AND CAUSE PERSONAL INJURY.

*SPECIFICATIONS ARE SUBJECT TO CHANGE WITHOUT NOTICE. SPECIFIC WARRANTY REMEDY LIMITATIONS APPLY. CALL 1-603-456-2011 OR GO TO WWW.MADGETECH.COM FOR DETAILS.

ORDERING INFORMATION

MODEL	DESCRIPTION
CTL2000	Carcass Temperature Logger
IFC200	Software, manual and USB interface cable
*NIST	N.I.S.T. Calibration Certificate

For Quantity Discounts call 603-456-2011 or email sales@madgetech.com

*To order the product with the N.I.S.T. certificate add *-CERT* to the end of the part number and add \$60.00 to the price.

ASK ABOUT
OUR OTHER
DATA
LOGGERS

Temperature
Humidity
Pressure
pH
Level
Shock
LCD Display
Pulse/Event/State
Current
Voltage
Wireless
Intrinsically Safe
Spectral Vibration
Motion

Supplied in Australia by Instrument Choice
Call our scientists on 1300 737 871
www.instrumentchoice.com.au