

LA CROSSE® TECHNOLOGY

Wireless Weather Station



Welcome!

Congratulations on your new Wireless Weather Station and welcome to the La Crosse Technology family! This product was designed with you in mind by our hometown team of weather enthusiasts based in La Crosse, Wisconsin.

Instructional Manual
Model: 308-1711BL
DC: 031318

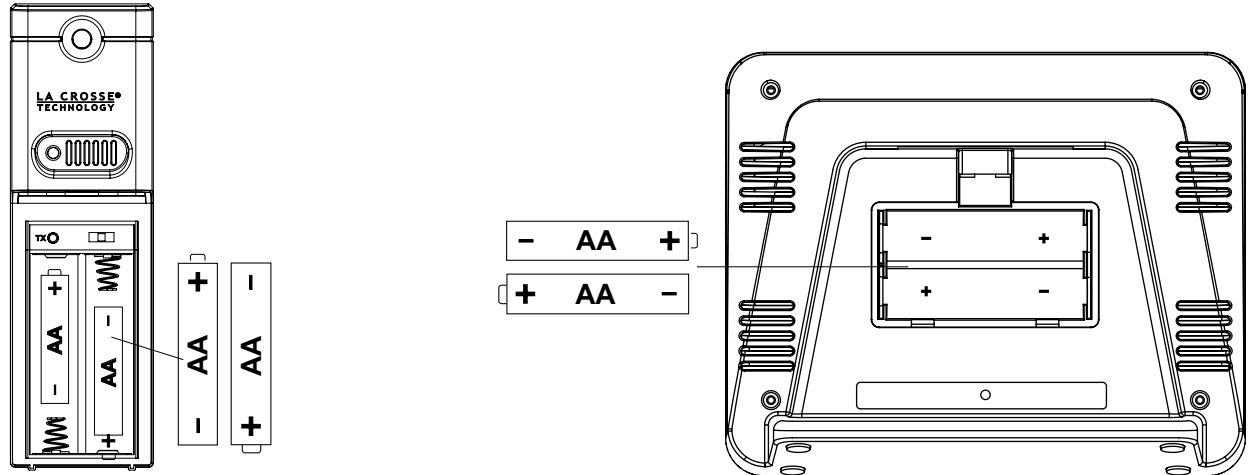
Table of Contents

3	Step 1: Power Up	7	Moon Phase
3	Step 2: Mounting Basics	7	Sensor Search
3	Step 3: Set Time, Date, etc.	8	Position Outdoor Sensor
4	Setting Menu	8	Low Battery
4	Your Weather Station Features	8	Restart
5	Alarm Time	8	Help Us, Help You!
5	Deactivate/Activate Alarm	8	Let's Be Social!
5	Snooze	9	Care and Maintenance
6	Set Temperature Alerts	9	Warranty and Support
6	Arm/Disarm Temperature Alerts	9	Specifications
6	MIN/MAX Temperatures	10	FCC Statement
7	Temperature/Humidity Trend Arrows	10	Canada Statement
7	Heat Index / Dew Point		

STEP 1: Power Up

Insert batteries (in any order):

- 2-AA batteries into thermo-hygro sensor (TX141TH-Bv2)
- 2-AA batteries in your station



STEP 2: Mounting Basics

Wait until your sensor information should be displayed on your station.
Here are a few quick tips for mounting your sensor:

- Keep out of direct sunlight & ensure the sensor is well-ventilated.
- We recommend mounting under a deck or eave facing north.
- Insert the mounting screw through the front of the sensor and into the wall.
- Tighten the screw to snug (do not over tighten).
- Be sure the outdoor sensor is mounted vertically to drain moisture.
- The maximum wireless transmission range is over 300 feet (91 meters) in open air, not including walls or floors.

STEP 3: Set Time, Date, etc.

You can manually adjust your station's settings:

1. Hold the TIME / DATE button for 3 seconds to enter settings menu.
2. Press and release the ARROW buttons to adjust the flashing values. Hold to adjust quickly.
3. Press and release the TIME / DATE button to confirm and move to the next item.

Settings Menu

Settings order:

1. Year
2. Month
3. Date
4. 12/24 Hour
5. Hour
6. Minutes
7. Fahrenheit/Celsius

Note: The weekday will set automatically as the year, month, and date are set.

To begin: Hold the TIME / DATE button 2 seconds, then release, to enter the settings menu. Use the ARROW buttons to adjust values. Press the TIME SET button to confirm and move to next item.

1. YEAR



2. MONTH



3. DATE



4. 12/24 HOUR



5. HOUR



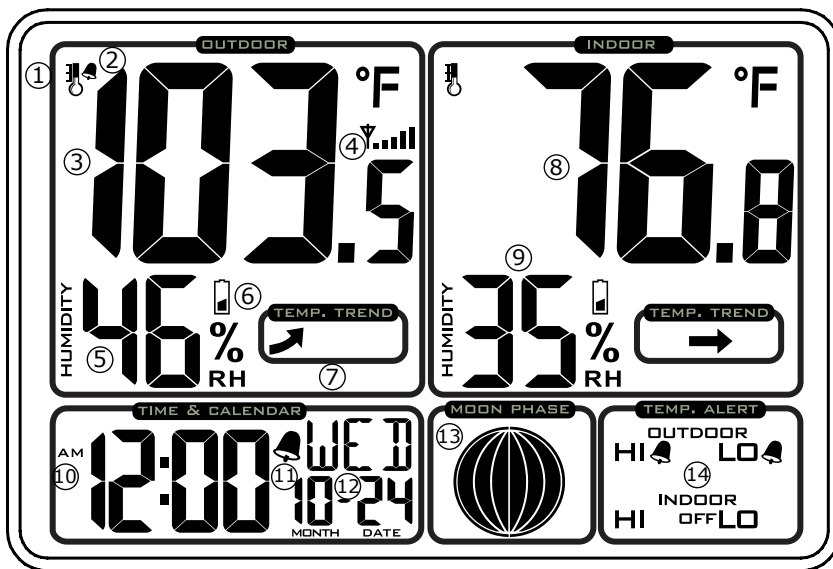
6. MINUTES



7. FAHRENHEIT/CELSIUS



Your Weather Station Features

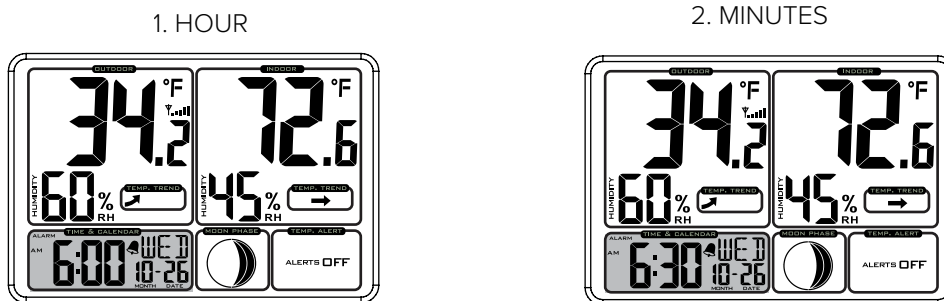


- ① Temperature indicator
- ② Temperature Alert indicator
- ③ Outdoor Temperature
- ④ Signal Strength indicator
- ⑤ Outdoor Humidity
- ⑥ Low Battery indicator
- ⑦ Temperature Trend Arrow
- ⑧ Indoor Temperature
- ⑨ Indoor Humidity
- ⑩ Time with AM/PM indicator
- ⑪ Time Alarm indicator
- ⑫ Calendar
- ⑬ Moon Phase
- ⑭ Alerts (HI-LO-OFF)

Alarm Time

Setting and activating time alarms are separate actions.

1. Hold the TIME ALARM button to enter alarm set mode.
2. Press the ▼ or ▲ buttons to adjust the values.
3. Press the TIME ALARM button to confirm & move to the next item.



Activate/Deactivate Alarm

- Press the TIME ALARM button once to view alarm time.
- Press the TIME ALARM button again to activate the alarm. Once activated, the bell icon appears.
- Press the TIME ALARM button again to deactivate the alarm. The bell icon will disappear.



Snooze

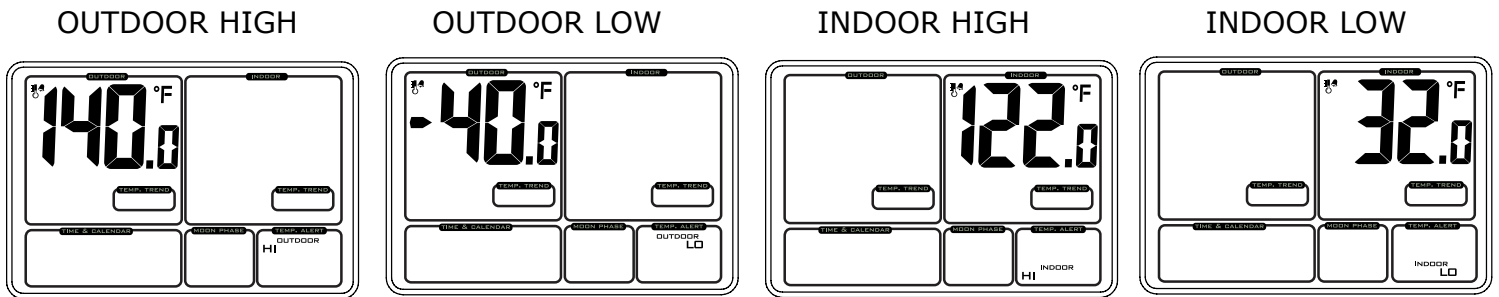
- When alarm sounds, press the SNOOZE button to silence the alarm for 10 minutes.
- The alarm bell icon will flash.
- In snooze mode, press any button except TIME ALARM to stop alarm for one day.

Note: The alarm is crescendo sound. The alarm sounds for two minutes and then shut off completely.

Set Temperature Alerts

Tip: Setting the alerts is one step. Arming the alerts is a separate step (see below)

1. Hold the TEMP ALERTS button until the station beeps.
2. The temperature alert value will blink in set mode.
3. Press the ▼ or ▲ buttons to adjust the values.
4. Press the TEMP ALERTS button to confirm & move to the next alert.



Arm/Disarm Temperature Alerts

1. Press and release the TEMP ALERTS button so the outdoor HI alert temperature shows and the word HI flashes.
 - Press UP ARROW to arm alert
 - Press DOWN ARROW to disarm alert
2. Press and release the TEMP ALERTS button to confirm and move to the outdoor LO, indoor HI and indoor LO alerts.
3. A bell appears above and alert when armed.
4. If no alerts are active, OFF will show.



OUTDOOR HI & LO ALERTS ARMED



ALL ALERTS DISARMED



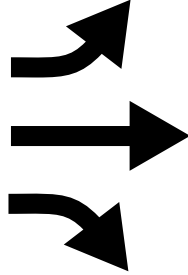
MIN/MAX Temperature Records

All MIN/MAX temperature/humidity records will reset automatically at 12:00 (midnight).

- Press and release the DOWN ARROW to view indoor/remote minimum readings.
- Press and release the UP ARROW to view indoor/remote maximum readings.

Temperature/Humidity Trend Arrows

- The temperature (2°F / 1°C) trend indicators update every 30 minutes.
- The humidity (3% RH) trend indicators update every 30 minutes or less.
- 3 hrs. increments which changes on every ½ hour e.g.: At 3:00 — compares to 12:00 data; at 3:30 — compares to 12:30, etc.



Rising: Trend is rising over past 3 hours

Steady: No change

Falling: Trend is falling over past 3 hours.

Heat Index | Dew Point

- Press the HEAT/DEW button once to view remote Heat Index.
- Press the HEAT/DEW button twice to view remote Dew Point.

Moon Phase

Moon phase based on lunar calendar, and time and date set on the weather station.



New Moon



Small Waxing
Crescent



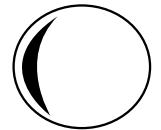
Large Waxing
Crescent



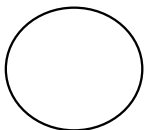
First Quarter



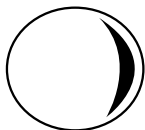
Small Waxing
Gibbous



Large Waxing
Gibbous



Full Moon



Large Waning
Gibbous



Small Waning
Gibbous



Last Quarter



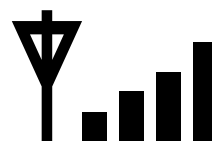
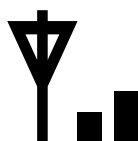
Large Waning
Crescent



Small Waning
Crescent

Sensor Search

- Hold the HEAT/DEW button for 3 seconds to search for the outdoor temperature/humidity sensor.
- The strength signal icon will animate until the sensor signal is received, or for 3 minutes if no signal available.



Position Outdoor Sensor

- Mount the outdoor sensor on a north-facing wall or in any well shaded area. Under an eave or deck rail is preferred.
- The maximum transmitting range to the weather station is over 300 feet (91 meters) in open air, not including walls.
- Position sensor vertically to allow moisture to drain.

Low Battery

- Battery by Outdoor Temperature, replace batteries in the sensor.
- Battery by Indoor Temperature, replace batteries in the weather station.

Restart

When the outdoor readings show dashes:

- Bring the sensor in the house at least five feet from the station.
- Remove batteries from the sensor, and from the station.
- Press any button 20 times.
- After 15 minutes insert batteries into the sensor and the station.
- Wait 15 minutes to establish a strong connection. Place sensor outside in shaded location.

Help Us, Help You!

If you have ideas for features or support solutions you'd like to see us make, please let us know! We truly want to make owning a La Crosse Technology product not only a practical experience, but also a fun one. So email us at: store@lacrossetechnology.com

Let's Be Social!

Follow us on our social media outlets for the latest promotions, product support, and awesome giveaways.



Care and Maintenance

- Do not mix old and new batteries.
- Do not mix Alkaline, Standard, Lithium, or Rechargeable Batteries.
- Always purchase the correct size and grade of battery most suitable for intended use.
- Replace all batteries of a set at the same time.
- Clean the battery contacts and also those of the device prior to battery installation.
- Ensure the batteries are installed with correct polarity (+ and -).
- Remove batteries from equipment when it is not used for an extended period of time.
- Promptly remove expired batteries.

Warranty and Support

La Crosse Technology, Ltd. provides a 1-year limited time warranty (from date of purchase) on this product relating to manufacturing defects in materials & workmanship.

Before returning a product, please contact our friendly customer support with questions or visit our online help:

Phone: 1-608-782-1610

Online Product Support and Registration: www.lacrossetechnology.com/support

Specifications

Indoor

Temperature Range: 32° F to 122° F (0° C to 50° C)
Humidity Range: 10% RH to 99%RH

Thermo-hygro Sensor

Temperature Range: -40° F to 140° F (-40° C to 60° C)
Note: Temperatures below -20°F (-29°C) require Lithium batteries in the outdoor sensor.
Humidity Range: 10% RH to 99%RH
Transmission Range: Up to 300 feet (91 meters) in open air, RF 433 MHz

Power

Weather Station: 2-AAA batteries not included
TX141TH-Bv2 Thermo-hygro Sensor: 2-AA batteries not included

Battery Life

Weather Station: over 24 months with reputable batteries.
TX141TH-Bv2 Thermo-hygro Sensor: over 24 months with reputable batteries.

Dimensions

Weather Station: 5.40" L x 1.68" W x 4.40" H (13.72 L x 4.28 W x 11.18 H cm)
TX141TH-Bv2 Thermo-hygro Sensor: 1.57" L x .82" W x .11" H (4.0 L x 2.08 L x 12.98 H cm)

FCC Statement

This equipment has been tested and found to comply with the limits for a Class B digital device, pursuant to part 15 of the FCC Rules. These limits are designed to provide reasonable protection against harmful interference in a residential installation. This equipment generates, uses and can radiate radio frequency energy and, if not installed and used in accordance with the instructions, may cause harmful interference to radio communications. However, there is no guarantee that interference will not occur in a particular installation.

If this equipment does cause harmful interference to radio or television reception, which can be determined by turning the equipment off and on, the user is encouraged to try to correct the interference by one or more of the following measures:

- Reorient or relocate the receiving antenna.
- Increase the separation between the equipment and receiver.
- Connect the equipment into an outlet on a circuit different from that to which the receiver is connected.
- Consult the dealer or an experienced radio/TV technician for help.

This device must not be co-located or operating in conjunction with any other antenna or transmitter.

Operation is subject to the following two conditions:

- (1) This device may not cause harmful interference, and
- (2) This device must accept any interference received, including interference that may cause undesired operation.

Caution!

The manufacturer is not responsible for any radio or TV interference caused by unauthorized changes or modifications to this equipment. Such changes or modifications could void the user authority to operate the equipment.

This equipment must be installed and operated in accordance with provided instructions and the antenna(s) used for this transmitter must be installed to provide a separation distance of at least 20 cm from all persons and must not be co-located or operating in conjunction with any other antenna or transmitter

All rights reserved. This manual may not be reproduced in any form, even in part, or duplicated or processed using electronic, mechanical or chemical process without the written permission of the publisher. This booklet may contain errors or misprints.

The information it contains is regularly checked and corrections are included in subsequent editions. We disclaim any responsibility for any technical error or printing error, or their consequences.

All trademarks and patents are recognized.

Canada Statement

This device complies with Industry Canada's licence-exempt RSSs. Operation is subject to the following two conditions:

- (1) This device may not cause interference; and
- (2) This device must accept any interference, including interference that may cause undesired operation of the device.

Le présent appareil est conforme aux CNR d'Industrie Canada applicables aux appareils radio exempts de licence.

L'exploitation est autorisée aux deux conditions suivantes :

- (1) l'appareil ne doit pas produire de brouillage;
- (2) l'utilisateur de l'appareil doit accepter tout brouillage radioélectrique subi, même si le brouillage est susceptible d'en compromettre le fonctionnement.